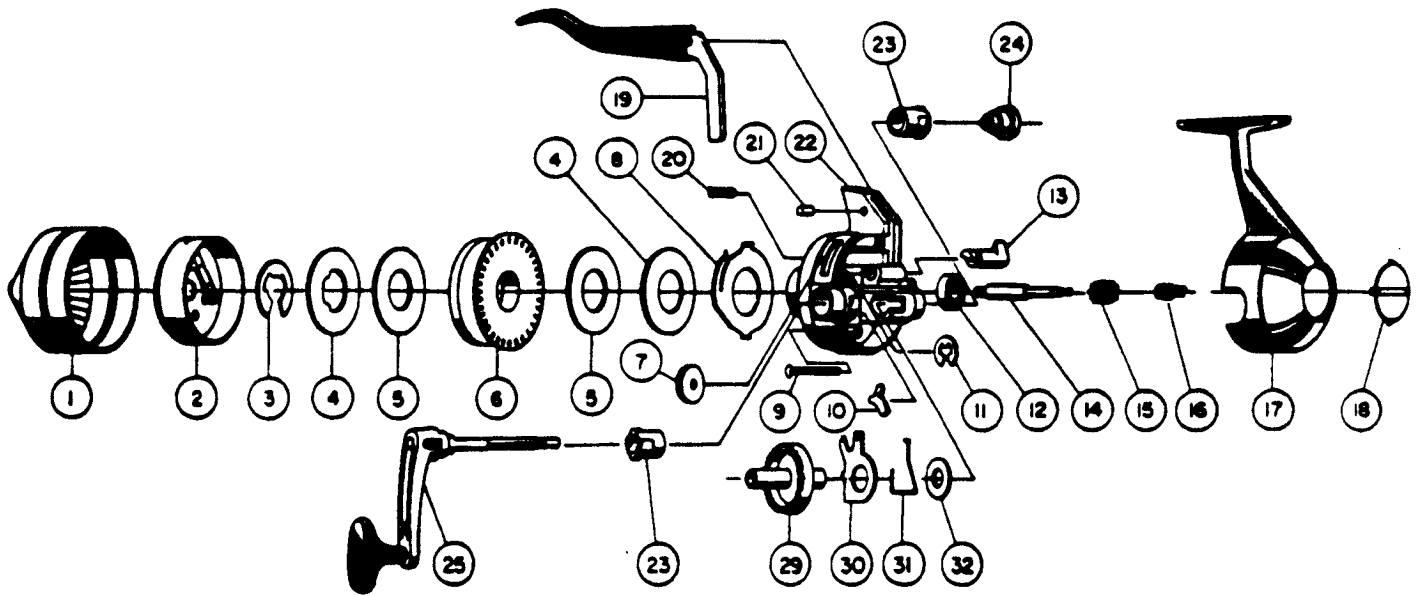


TEBCO FL44 Classic



KEY PART

NO.	NO.	DESCRIPTION	PRICE
1	CJ324-5	FRONT COVER	5.61
2	HJ310	SPINNER HEAD S/A	5.68
3	GZ034-1	SPOOL RETAINER CLIP	.52
4	CJ040	SPOOL WASHER	.88
5	EE108	SPOOL WASHER	.34
6	CJ021	SPOOL	2.80
6	CJ321-20M	WOUND SPOOL 108	5.21
7	BJ032	CLUTCH WHEEL	.80
8	CJ027	CLUTCH RING	1.14
9	CJ126	MACHINE SCREW	.46
10	HJ060	ANTI-REVERSE PAWL	.52
11	BJ121	RETAINER CLIP	.29
12	AZ028	BALL BEARING	6.19
13	CJ002	ANTI-REVERSE ACTUATOR	.69
14	CJ019	CENTER SHAFT	1.72
15	CJ011	PINION GEAR	2.87
16	DJ020	CENTER SHAFT SPRING	.39
17	CJ323	BACK COVER S/A	7.40
18	BJ075	BACK CAP	.85
19	CJ350-2	FINGER BRAKE S/A	2.51
20	BJ054-2	CLUTCH SCREW	.62
21	CJ172	FINGER BRAKE PIN	.52
22	CJ301-4	BODY S/A	8.60
23	CJ026	CRANK BEARING	1.14
24	DJ769-1	CRANK ROD NUT	1.03
25	CJ318-5	CRANK HANDLE	6.42
29	CJ012-2	CRANK GEAR	3.32
30	CJ014	ANTI-REVERSE DRAG	.63
31	CJ061	ANTI-REVERSE PAWL SPRING	.34
32	CJ106	FLAT WASHER	.34

Prices subject to change without notice. Prices do not include postage and handling.

PLEASE ORDER BY PART NUMBER

Rev. 11/90

Tebco Division Brunswick Corporation, Box 270, Tulsa, OK 74101 USA 918-636-6881

