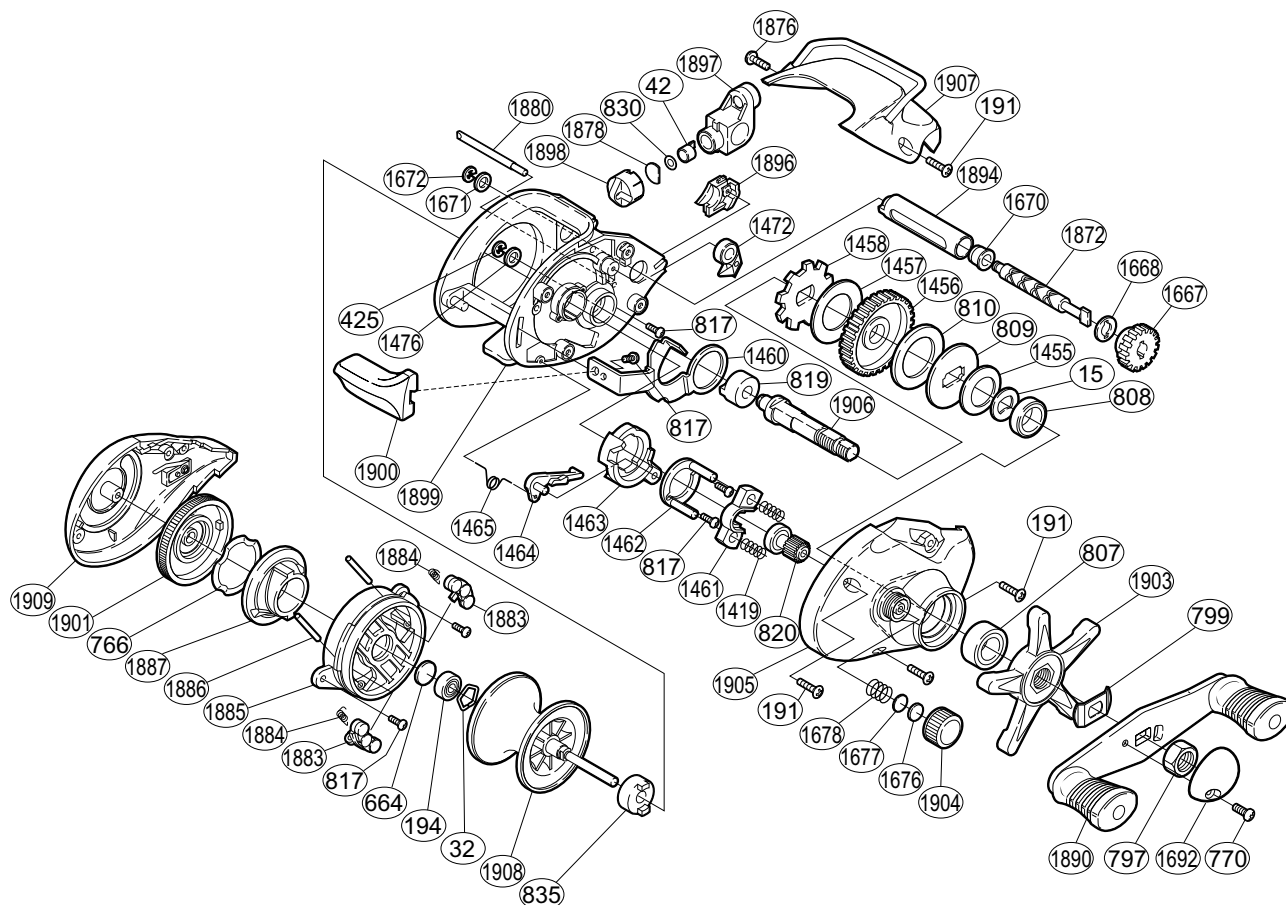


# SHIMANO®

## CRESTFIRE®

### CR-200B



Part No.	Description	Part No.	Description	Part No.	Description
BNT0015	Drag Spring Washer	BNT1456	Drive Gear	BNT1878	Pawl Cap Spacer
BNT0032	Bearing Retainer	BNT1457	Drive Shaft Washer (B)	BNT1880	Stabilizer Bar
BNT0042	Line Guide Pawl	BNT1458	Anti-Reverse Ratchet	BNT1883	Magnet Retainer
BNT0191	Multi-Purpose Screw	BNT1460	Clutch Plate	BNT1884	Magnet Retainer Spring
BNT0194	Ball Bearing	BNT1461	Yoke	BNT1885	Dial Case
BNT0425	Drive Gear Retainer	BNT1462	Clutch Cam Retainer	BNT1886	Magnet Retainer Shaft
BNT0664	Spacer (B)	BNT1463	Clutch Cam	BNT1887	Brake Cam
BNT0766	Dial Friction Washer	BNT1464	Clutch Pawl	BNT1890	Handle Assembly
BNT0770	Handle Nut Plate Screw	BNT1465	Clutch Pawl Spring	BNT1894	Level Wind Guard
BNT0797	Handle Nut	BNT1472	Anti-Reverse Pawl	BNT1896	Drive Shaft Cover
BNT0799	Friction Washer	BNT1476	Drive Shaft Washer (D)	BNT1897	Line Guide
BNT0807	Drive Shaft Bearing	BNT1667	Worm Gear	BNT1898	Pawl Cap
BNT0808	Friction Washer (B)	BNT1668	Worm Shaft Washer (A)	BNT1899	One-Piece Frame
BNT0809	Key Washer	BNT1670	Worm Bushing	BNT1900	Quick-Fire II Clutch Bar
BNT0810	Drag Washer	BNT1671	Worm Shaft Washer (B)	BNT1901	Magnetic Control Dial
BNT0817	Multi-Purpose Screw	BNT1672	"E" Lock	BNT1903	Star Drag
BNT0819	Drive Shaft Bushing	BNT1676	Spool Tension Spacer (B)	BNT1904	Cast Control Cap
BNT0820	Pinion Gear	BNT1677	Spool Tension Spacer (A)	BNT1905	Right Side Plate
BNT0830	Spacer (optional)	BNT1678	Spool Tension Spring	BNT1906	Drive Shaft
BNT0835	Spool Shaft Bushing (B)	BNT1692	Handle Nut Plate	BNT1907	Thumb Rest
BNT1419	Yoke Spring	BNT1872	Worm Shaft	BNT1908	Spool
BNT1455	Drag Spring Washer	BNT1876	Thumb Rest Screw	BNT1909	Left Side Plate