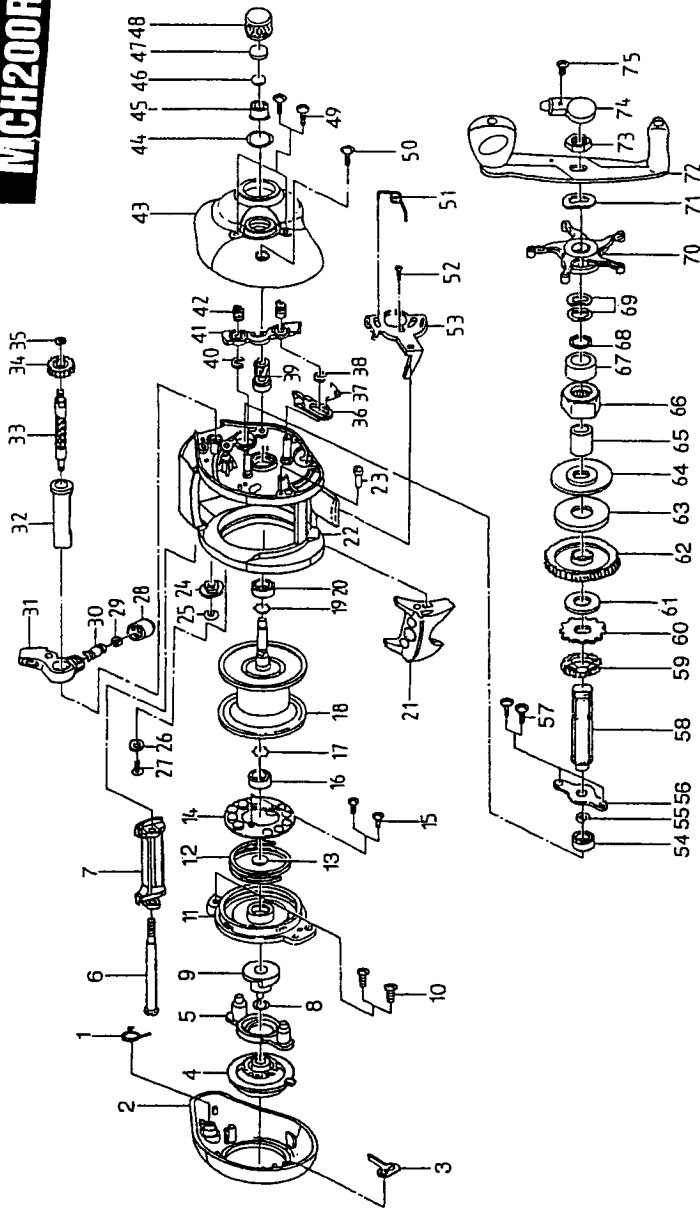


MCH200R



- | | | | | | | | | | | | |
|----|-----------------------|---------|----|-------------------------|---------|----|-----------------------|---------|----|----------------------|---------|
| 1 | SIDE PLATE SPRING | 1065879 | 23 | SPRING BUSHING | 1065906 | 45 | BUSHING | 1065949 | 67 | BALL BEARING | 1065869 |
| 2 | "SIDE PLATE, NONGEAR" | 1065881 | 24 | WORM SHAFT BUSHING | 1065908 | 46 | TENSION SHIM | 1065950 | 68 | WASHER | 1065970 |
| 3 | MAG. ADJ. CLICKER | 1065883 | 25 | E-CLIP | 1065907 | 47 | TENSION RUBBER | 1065951 | 69 | DRAG SPRING WASHER | 1065971 |
| 4 | MAG. ADJ. KNOB | 1065880 | 26 | WASHER | 1065905 | 48 | TENSION KNOB | 1065952 | 70 | STAR DRAG | 1065972 |
| 5 | MAG. BACK CAP | 1065887 | 27 | WASHER SCREW | 1065904 | 49 | SIDE PLATE SCREWS | 1065953 | 71 | HANDLE SPRING WASHER | 1065974 |
| 6 | CARRIER GUIDE | 1065901 | 28 | PAWL CAP | 1065909 | 50 | SIDE PLATE SCREW | 1065985 | 72 | HANDLE ASSEMBLY | 1065975 |
| 7 | FRONT COVER | 1065902 | 29 | PAWL ADJUSTMENT SHIM | 1065915 | 51 | THUMB BAR SPRING | 1065984 | 73 | HANDLE NUT | 1065976 |
| 8 | O-RING | 1065980 | 30 | PAWL | 1065910 | 52 | THUMB BAR PLATE SCREW | 1065933 | 74 | UNI-TOOL | 1065978 |
| 9 | MAG. RAMP | 1065888 | 31 | LINE GUIDE | 1065911 | 53 | THUMB BAR PLATE | 1065931 | 75 | UNI-TOOL SCREW | 1065979 |
| 10 | MAG. HOUSING SCREWS | 1065892 | 32 | WORM SHAFT COVER | 1065912 | 54 | BUSHING | 1065954 | | | |
| 11 | MAG. HOUSING | 1065890 | 33 | WORM SHAFT | 1065913 | 55 | E-CLIP | 1065955 | | | |
| 12 | MAG. SPRING | 1065893 | 34 | WORM SHAFT GEAR | 1065914 | 56 | BEARING PLATE | 1065956 | | | |
| 13 | SPOOL WASHER | 1065981 | 35 | E-CLIP | 1065916 | 57 | BEARING PLATE SCREW | 1065957 | | | |
| 14 | MAG. PLATE | 1065894 | 36 | KICKER | 1065938 | 58 | CRANK SHAFT | 1065958 | | | |
| 15 | MAG. PLATE SCREWS | 1065895 | 37 | KICKER SPRING | 1065940 | 59 | O/S GEAR | 1065960 | | | |
| 16 | BUSHING | 1065896 | 38 | E-CLIP | 1065941 | 60 | LATCH GEAR | 1065961 | | | |
| 17 | RETAINER | 1065897 | 39 | PINION GEAR | 1065942 | 61 | SPACER WASHER | 1065962 | | | |
| 18 | SPOOL ASSEMBLY | 1065898 | 40 | E-CLIP | 1065940 | 62 | DRIVE GEAR | 1065963 | | | |
| 19 | RETAINER | 1065897 | 41 | PINION YOKE | 1065943 | 63 | DRAG B WASHER | 1065965 | | | |
| 20 | BUSHING | 1065900 | 42 | YOKER SPRING | 1065945 | 64 | DRAG D WASHER | 1065966 | | | |
| 21 | THUMB BAR | 1065929 | 43 | "SIDE PLATE, GEAR SIDE" | 1065946 | 65 | SLEEVE | 1065967 | | | |
| 22 | FRAME | 1065917 | 44 | O-RING | 1065948 | 66 | CLUTCH BEARING | 1065968 | | | |

62