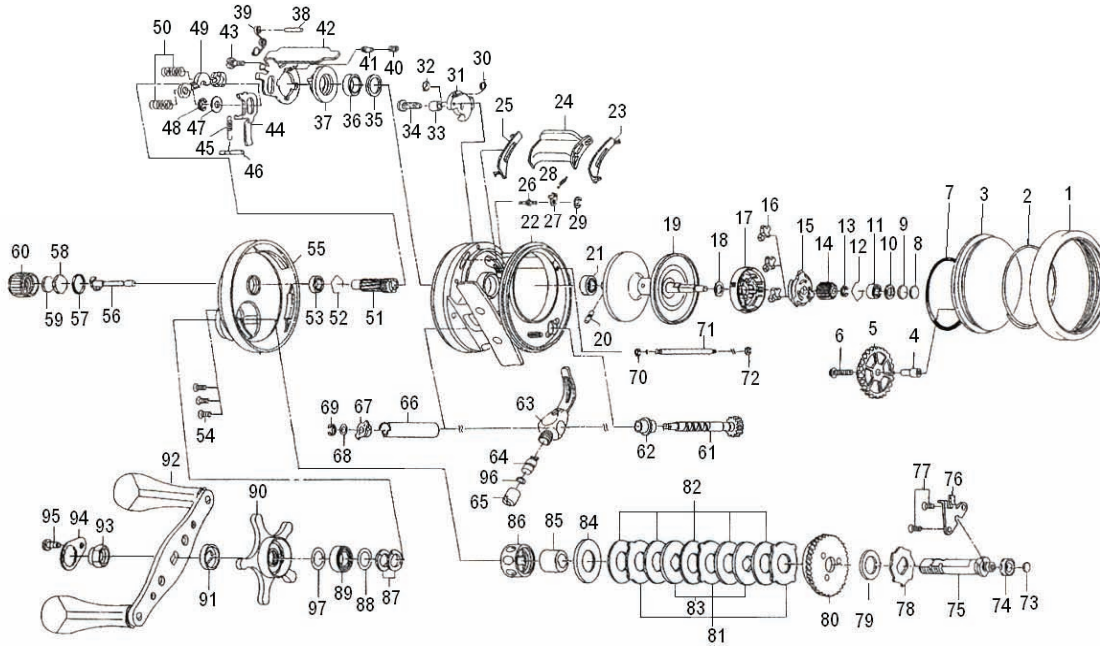


BAITCASTING REEL

TEAM DAIWA LUNA 300L



| Key No. | Parts No. | Parts Name | Key No. | Parts No. | Parts Name |
|---------|-----------|------------------------|---------|-----------|--------------------------|
| 1 | F79-8111 | R/S OUTER RING | 54 | 351-1106 | SIDE COVER SCREW |
| 2 | F79-8201 | BEARING RET A | 55 | G82-9801 | L/S PLT |
| 3 | G80-7502 | R/S PLT | 56 | F80-0501 | PINION SHAFT |
| 4 | F91-8901 | IDLE GEAR COLLAR | 57 | 171-5201 | O RING B |
| 5 | F91-8801 | IDLE GEAR | 58 | B17-5401 | SPOOL ADJ CAP METAL |
| 6 | F93-5401 | IDLE GEAR SCREW | 59 | B17-5503 | RUBBER WASHER |
| 7 | F79-8301 | O RING A | 60 | F57-4403 | CAST CONTROL CAP |
| 8 | 375-7404 | BEARING METAL WASHER | 61 | F91-8201 | WORM SHAFT |
| 9 | 375-7411 | SPACER A | 62 | F91-7401 | WORM SHAFT HOLDER A |
| 10 | G18-5101 | SPACER B | 63 | F97-1201 | LINE GUIDE |
| 11 | G51-1502 | BALL BEARING A | 64 | 121-4212 | LINE GUIDE PAWL |
| 12 | F03-2201 | BEARING RET B | 65 | 341-5901 | LINE GUIDE NUT |
| 13-21 | Z01-7536 | SPOOL | 66 | F91-7501 | LEVEL WIND GUARD |
| 22 | G83-0001 | FRAME | 67 | F79-5801 | WORM SHAFT HOLDER B |
| 23 | F79-3306 | CLUTCH LEVER PLT A | 68 | 376-1801 | WORM SHAFT HOLDER WASHER |
| 24 | F89-3301 | CLUTCH LEVER | 69 | 320-5901 | WORM SHAFT RET |
| 25 | F79-3203 | CLUTCH LEVER PLT B | 70 | F55-0501 | R/S PLT SCREW RET |
| 26 | F92-4001 | SPOOL PIN | 71 | G45-6401 | STABILIZER BAR |
| 27 | G83-0401 | CLICK PAWL | 72 | F55-0501 | R/S PLT SCREW RET |
| 28 | F99-5501 | CLICK SPRING | 73 | F57-5601 | DRIVE SHAFT WASHER A |
| 29 | B86-4101 | CLICK RET | 74 | B55-0301 | BUSHING |
| 30 | G83-0201 | CLICK LEVER SPRING | 75 | F93-8602 | DRIVE SHAFT |
| 31 | G83-0301 | CLICK LEVER | 76 | F99-8001 | DRIVE SHAFT RET |
| 32 | B86-4101 | CLICK SPRING RET | 77 | E13-4501 | DRIVE SHAFT RET SCREW |
| 33 | F94-0301 | CLICK LEVER COLLAR | 78 | G12-0901 | A/R RATCHET |
| 34 | 352-2501 | A/R LEVER SCREW | 79 | E42-5302 | DRIVE SHAFT WASHER B |
| 35 | F79-3401 | CLUTCH CAM RET | 80 | G83-0801 | DRIVE GEAR |
| 36 | G43-1001 | BALL BEARING B | 81 | F79-6101 | EARED WASHER |
| 37 | F99-7401 | CLUTCH CAM | 82 | G45-5801 | DRAG WASHER B |
| 38 | F79-4401 | CLUTCH SPRING PIN | 83 | F79-6301 | KEY WASHER A |
| 39 | G60-8901 | CLUTCH SPRING | 84 | B36-0303 | KEY WASHER B |
| 40 | F28-7901 | YOKE PLT SPRING | 85 | F79-6501 | GEAR SHAFT COLLAR |
| 41 | G00-2901 | YOKE PLT PIN | 86 | F55-2703 | ROLLER CLUTCH |
| 42 | G83-0501 | YOKE PLT | 87 | 150-8901 | SPRING WASHER |
| 43 | F79-3801 | YOKE PLT SCREW | 88 | F36-6801 | BEARING WASHER B |
| 44 | F99-7901 | CLUTCH TRIP PLT | 89 | G42-7202 | BALL BEARING D |
| 45 | F79-4701 | CLUTCH TRIP PLT SPRING | 90 | G68-0402 | STAR DRAG |
| 46 | F79-4601 | CLUTCH TRIP LEVER PIN | 91 | F85-0401 | HANDLE COLLAR |
| 47 | 371-6907 | CLUTCH TRIP PLT WASHER | 92 | G68-0501 | HANDLE |
| 48 | 320-1402 | CLUTCH TRIP LEVER RET | 93 | G68-2302 | HANDLE NUT |
| 49 | F99-8201 | YOKE | 94 | G67-8901 | HANDLE NUT PLT |
| 50 | F79-4901 | YOKE SPRING | 95 | G60-9201 | HANDLE NUT PLT SCREW |
| 51 | F99-8302 | PINION GEAR | 96 | 375-4101 | LINE GUIDE PAWL WASHER |
| 52 | E21-9701 | BEARING RET C | 97 | 373-7810 | SPACING SLEEVE |
| 53 | G43-0901 | BALL BEARING C | | | |